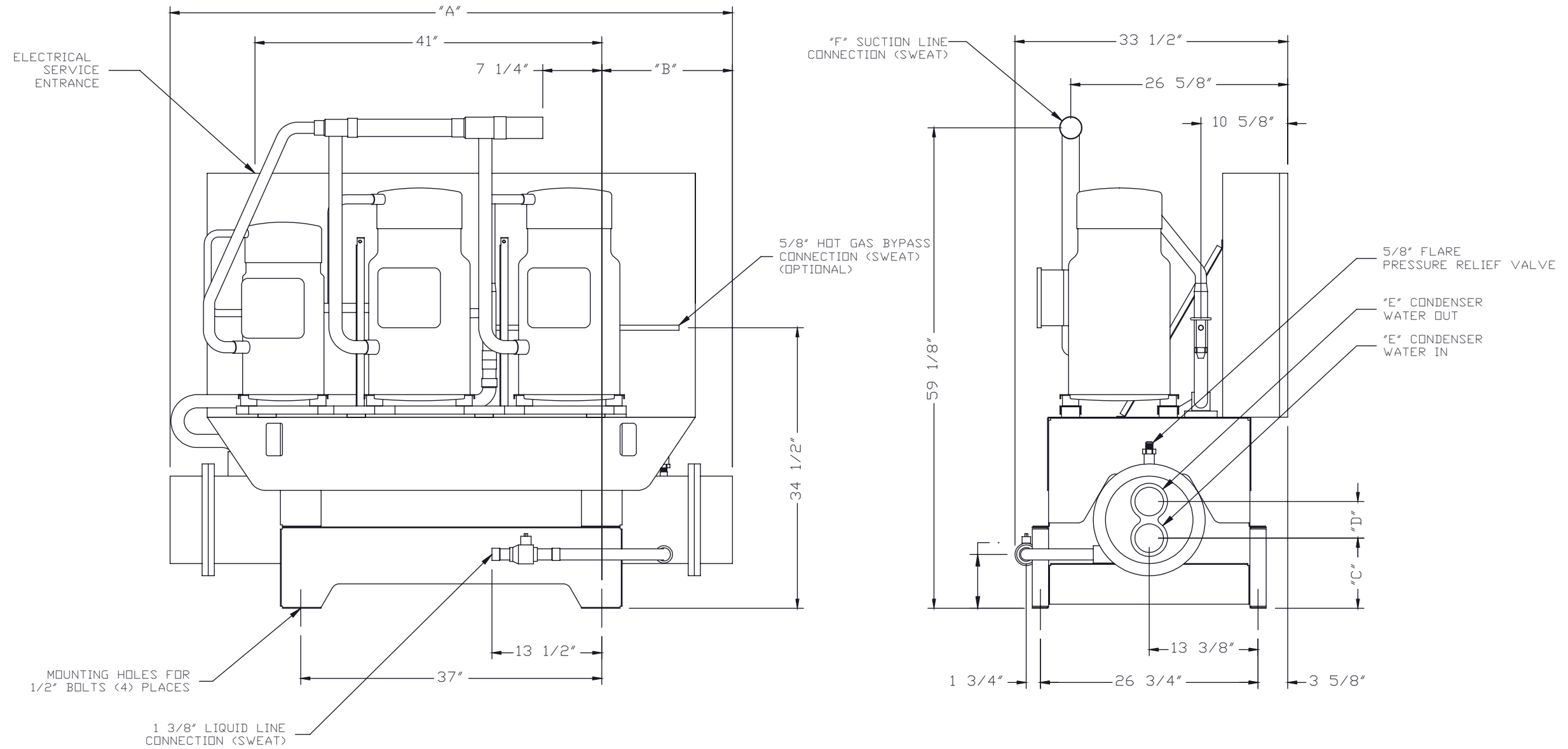


MODEL	PHYSICAL DATA							ELECTRICAL DATA – 208/230 VOLT, 3 ϕ , 60 HZ					ELECTRICAL DATA – 460 VOLT, 3 ϕ , 60HZ					ELECTRICAL DATA – 575 VOLT, 3 ϕ , 60HZ				
	"A"	"B"	"C"	"D"	"E"	"F"	OPERATING WEIGHT	COMPRESSOR RLA (EACH)	COMPRESSOR LRA (EACH)	MINIMUM CIRCUIT AMPACITY	MAXIMUM FUSE SIZE	RECOMMENDED TIME DELAY FUSE	COMPRESSOR RLA (EACH)	COMPRESSOR LRA (EACH)	MINIMUM CIRCUIT AMPACITY	MAXIMUM FUSE SIZE	RECOMMENDED TIME DELAY FUSE	COMPRESSOR RLA (EACH)	COMPRESSOR LRA (EACH)	MINIMUM CIRCUIT AMPACITY	MAXIMUM FUSE SIZE	RECOMMENDED TIME DELAY FUSE
SWU-35	66"	14 1/2"	8"	3 3/4"	2 1/2" FPT	2 1/8"	1327 LBS.	43/43/63	251/251/376	163	225	175	19/19/28	117/117/178	72	100	80	15/15/23	94/94/143	59	80	70
SWU-40	78"	20 1/2"	8"	3 3/4"	2 1/2" FPT	2 5/8"	1434 LBS.	43/63/63	251/376/376	183	225	200	19/28/28	117/178/178	81	110	90	15/23/23	94/143/143	67	80	75
SWU-45	69 1/8"	16 1/16"	8 5/8"	4 1/2"	3" FPT	2 5/8"	1621 LBS.	63/63/63	376/376/376	203	250	225	28/28/28	178/178/178	90	110	100	23/23/23	143/143/143	75	90	80



IMPORTANT

THE INFORMATION CONTAINED HEREON, WHICH IS THE PROPERTY OF NAPPS TECHNOLOGY CORPORATION, MUST BE MAINTAINED IN STRICT CONFIDENCE AND NO PORTION OF THIS MATERIAL MAY BE REPRODUCED OR USED FOR ANY PURPOSES WITHOUT THE EXPRESS WRITTEN CONSENT OF NAPPS TECHNOLOGY CORPORATION

ENGINEER'S SEAL	BY	DATE	REVISION	NAPPS TECHNOLOGY CORP. P.O. BOX 3066 LONGVIEW, TX 75606-3066 WWW.NAPPSTECH.COM			
	01	SMH 5-16-13	Added 575V Data	TITLE: TYPICAL SWU 35,40,45 TON SCROLL WATER COOLED CONDENSING UNIT			
	02	KRS 9-29-14	Removed R22 info				
SCALE: 1"=12"		DRAWN BY: M.GREER	CHECKED BY: M.GREER	APP'D BY: EGN	R407C UNITS		
DATE: 04/05/99					DRAWING NUMBER	REV. SHEET NO.	NAPPS JOB NO.
					SWU354045	02	1 OF 1