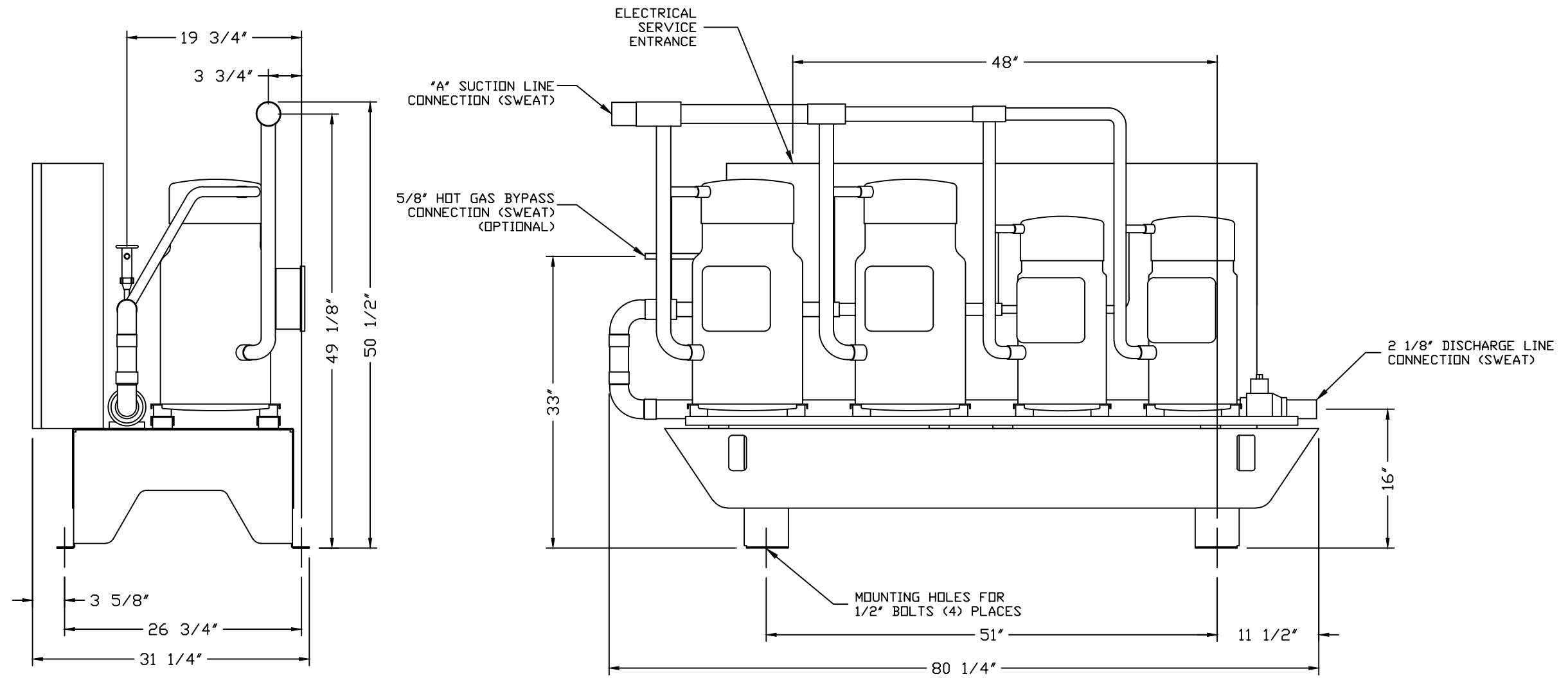



MODEL	PHYSICAL DATA		ELECTRICAL DATA - 208/230 VOLT, 3 $\phi$ , 60 HZ					ELECTRICAL DATA - 460 VOLT, 3 $\phi$ , 60HZ				
	"A"	OPERATING WEIGHT	COMPRESSOR RLA (EACH)	COMPRESSOR LRA (EACH)	MINIMUM CIRCUIT AMPACITY	MAXIMUM FUSE SIZE	RECOMMENDED TIME DELAY FUSE	COMPRESSOR RLA (EACH)	COMPRESSOR LRA (EACH)	MINIMUM CIRCUIT AMPACITY	MAXIMUM FUSE SIZE	RECOMMENDED TIME DELAY FUSE
SCU-50	2 5/8"	1224 LBS.	63/63/43/43	376/376/251/251	225	250	250	28/28/19/19	178/178/117/117	99	125	110
SCU-60	3 1/8"	1358 LBS.	63/63/63/63	376/376/376/376	265	300	300	28/28/28/28	178/178/178/178	118	125	125



**IMPORTANT**  
 THE INFORMATION CONTAINED HEREIN, WHICH IS THE PROPERTY OF NAPP'S TECHNOLOGY CORPORATION, MUST BE MAINTAINED IN STRICT CONFIDENCE AND NO PORTION OF THIS MATERIAL MAY BE REPRODUCED OR USED FOR ANY PURPOSE WITHOUT THE EXPRESS WRITTEN CONSENT OF NAPP'S TECHNOLOGY CORPORATION.

ENGINEER'S SEAL	BY	DATE	REVISION


 NAPP'S TECHNOLOGY CORP.  
 P.O. BOX 3066  
 LONGVIEW, TX 75606-3066  
 WWW.NAPPSTECH.COM

TITLE: TYPICAL SCU 50,60 TON SCROLL COMPRESSOR UNIT  
 SCALE: 1"=12"    DRAWN BY: M. GREER    CHECKED BY: M. GREER    APP'D BY: EGN  
 DATE: 04/05/99

R22/407C UNITS    **B**  
 DRAWING NUMBER    REV. SHEET NO.    NAPP'S JOB NO.

SCU5060    1 OF 1