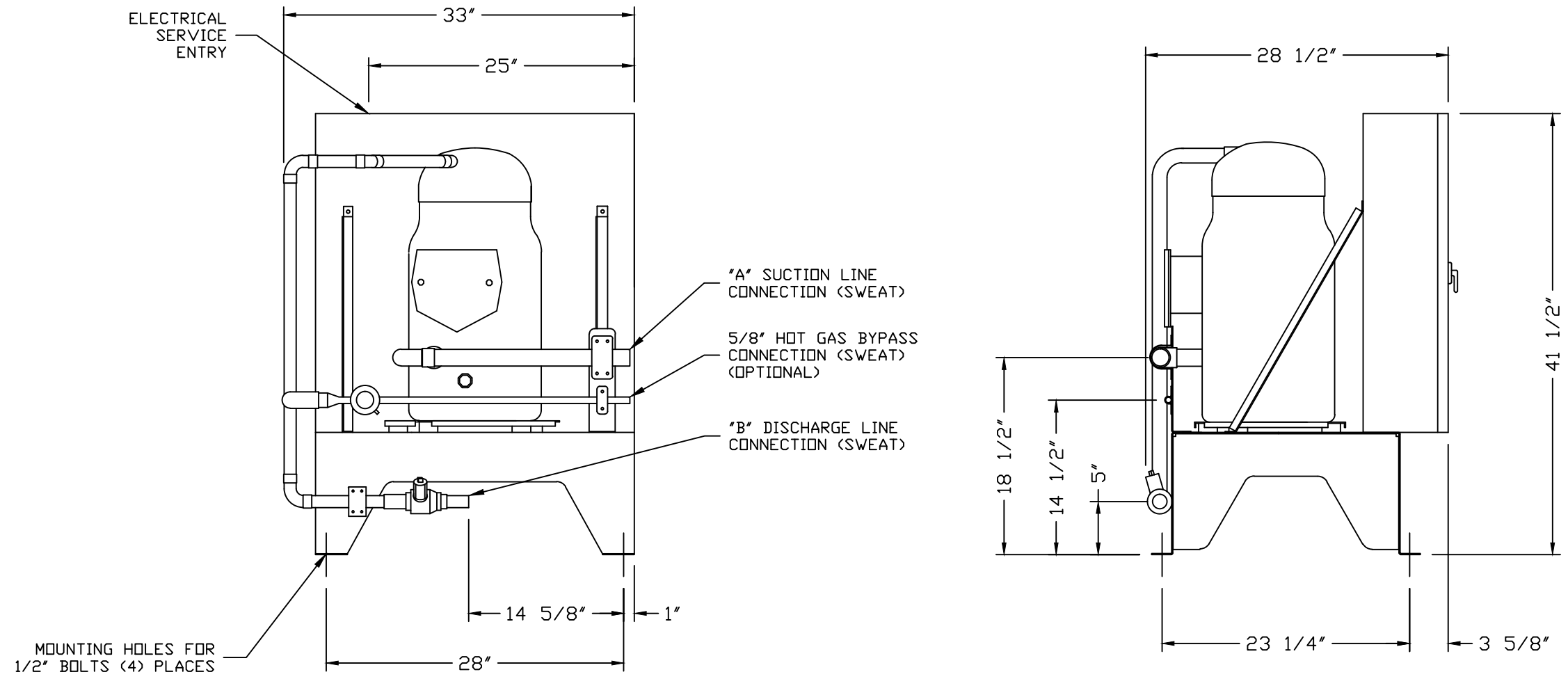


MODEL	PHYSICAL DATA			ELECTRICAL DATA - 208/230 VOLT, 3 ϕ , 60 HZ					ELECTRICAL DATA - 460 VOLT, 3 ϕ , 60HZ				
	"A"	"B"	OPERATING WEIGHT	COMPRESSOR RLA	COMPRESSOR LRA	MINIMUM CIRCUIT AMPACITY	MAXIMUM FUSE SIZE	RECOMMENDED TIME DELAY FUSE	COMPRESSOR RLA (EACH)	COMPRESSOR LRA (EACH)	MINIMUM CIRCUIT AMPACITY	MAXIMUM FUSE SIZE	RECOMMENDED TIME DELAY FUSE
SCU-10	1 3/8"	7/8"	360 LBS.	43	251	53	90	60	19	117	23	40	30
SCU-15	1 5/8"	1 1/8"	427 LBS.	63	376	78	125	90	28	178	35	60	40



IMPORTANT
 THE INFORMATION CONTAINED HEREON, WHICH IS THE PROPERTY OF NAPPS TECHNOLOGY CORPORATION, MUST BE MAINTAINED IN STRICT CONFIDENCE AND NO PORTION OF THIS MATERIAL MAY BE REPRODUCED OR USED FOR ANY PURPOSE WITHOUT THE EXPRESS WRITTEN CONSENT OF NAPPS TECHNOLOGY CORPORATION

ENGINEER'S SEAL	BY	DATE	REVISION

Napps NAPPS TECHNOLOGY CORP.
 P.O. BOX 3066
 LONGVIEW, TX 75606-3066
 WWW.NAPPSTECH.COM

TITLE: TYPICAL SCU 10,15 TON SCROLL COMPRESSOR UNIT

SCALE: 1"=12" DRAWN BY: M.GREER CHECKED BY: M.GREER APP'D BY: EGN

R22/407C UNITS

DRAWING NUMBER	REV.	SHEET NO.	NAPPS JOB NO.
SCU1015		1 OF 1	