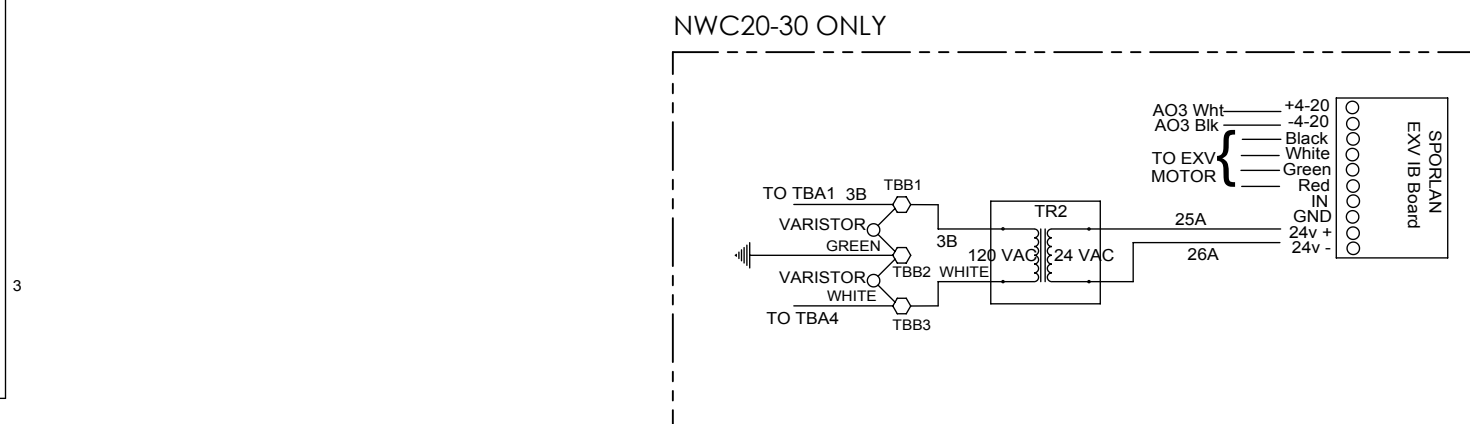
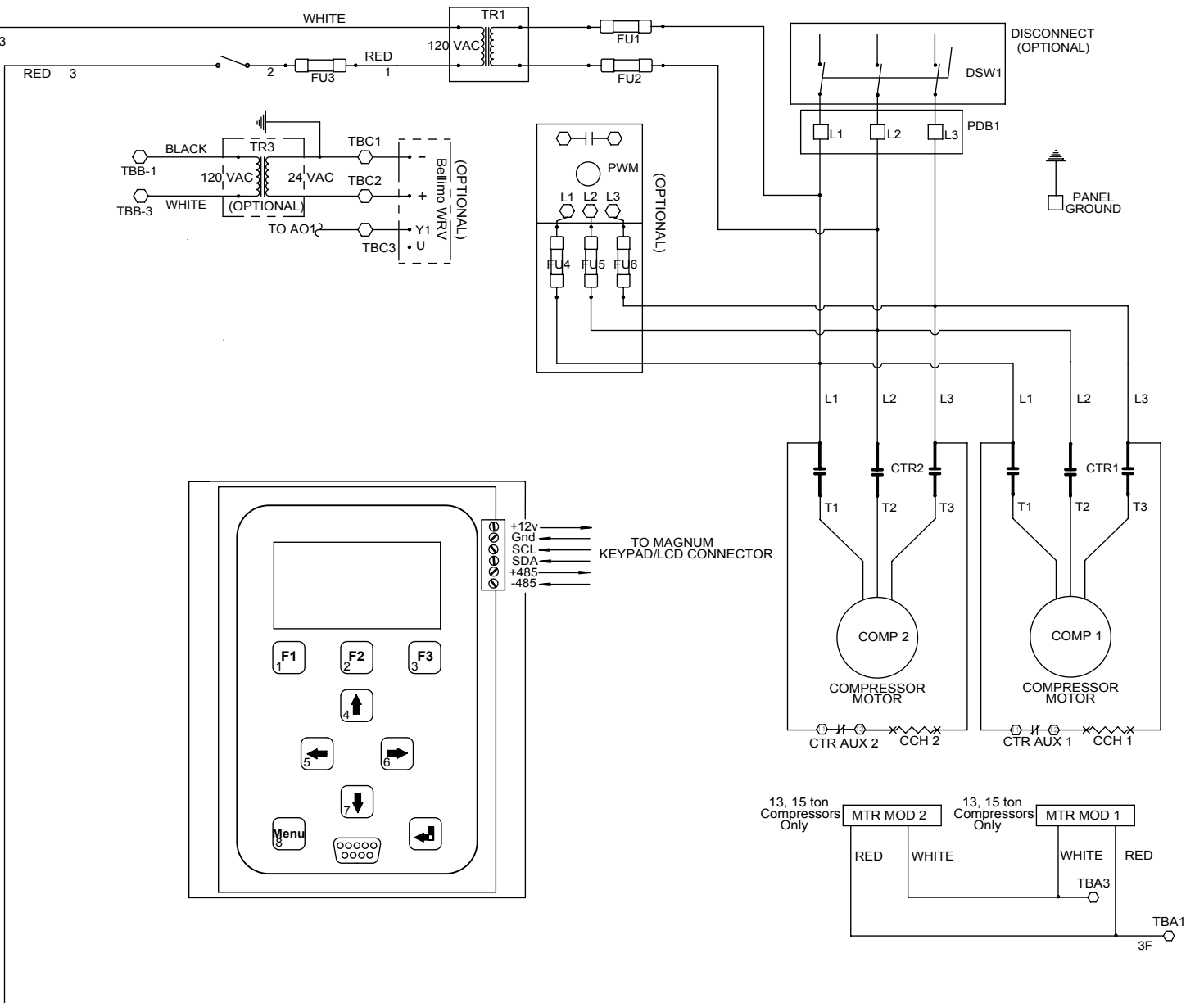


MCS Magnum Control Unit



ENGINEER'S SEAL	#	BY	DATE	REVISION
	1	AMS	04/07/2011	General update / redrawn for clarity
	2	SMH	04/13/2012	Added new evaporator core temperature sensor M-12 to MCS control unit
	3	SMH	02/13/2013	Add NWC Only where EXV board referenced, changed LonTalk Board to Communications Board
	4	SMH	03/30/13	Changed NWC Only to NWC20-30 Only where EXV board referenced
	5	SMH	08/27/13	Removed the word Optional from the hot gas solenoid.

IMPORTANT	
<small>THE INFORMATION CONTAINED HEREIN, WHICH IS THE PROPERTY OF NAPPS TECHNOLOGY CORPORATION, MUST BE MAINTAINED IN STRICT CONFIDENCE AND NO PORTION OF THIS MATERIAL MAY BE REPRODUCED OR USED FOR ANY PURPOSE WITHOUT THE EXPRESS WRITTEN CONSENT OF NAPPS TECHNOLOGY CORPORATION.</small>	

Napps		<small>NAPPS TECHNOLOGY CORP. P.O. BOX 3066 LONGVIEW, TX 75606-3066 WWW.NAPPSTECH.COM</small>	
TITLE: 15 - 30 TON CHILLER UNIT POWER/CONTROL WIRING DIAGRAM			
SCALE: 1.5"=12"	DATE: 04/13/12	DRAWN BY: PMK	CHECKED BY: BAR
R410 CHILLERS		B	
DRAWING NUMBER	REV. SHEET NO.	NAPPS JOB NO.	
80500011	5	1 OF 1	