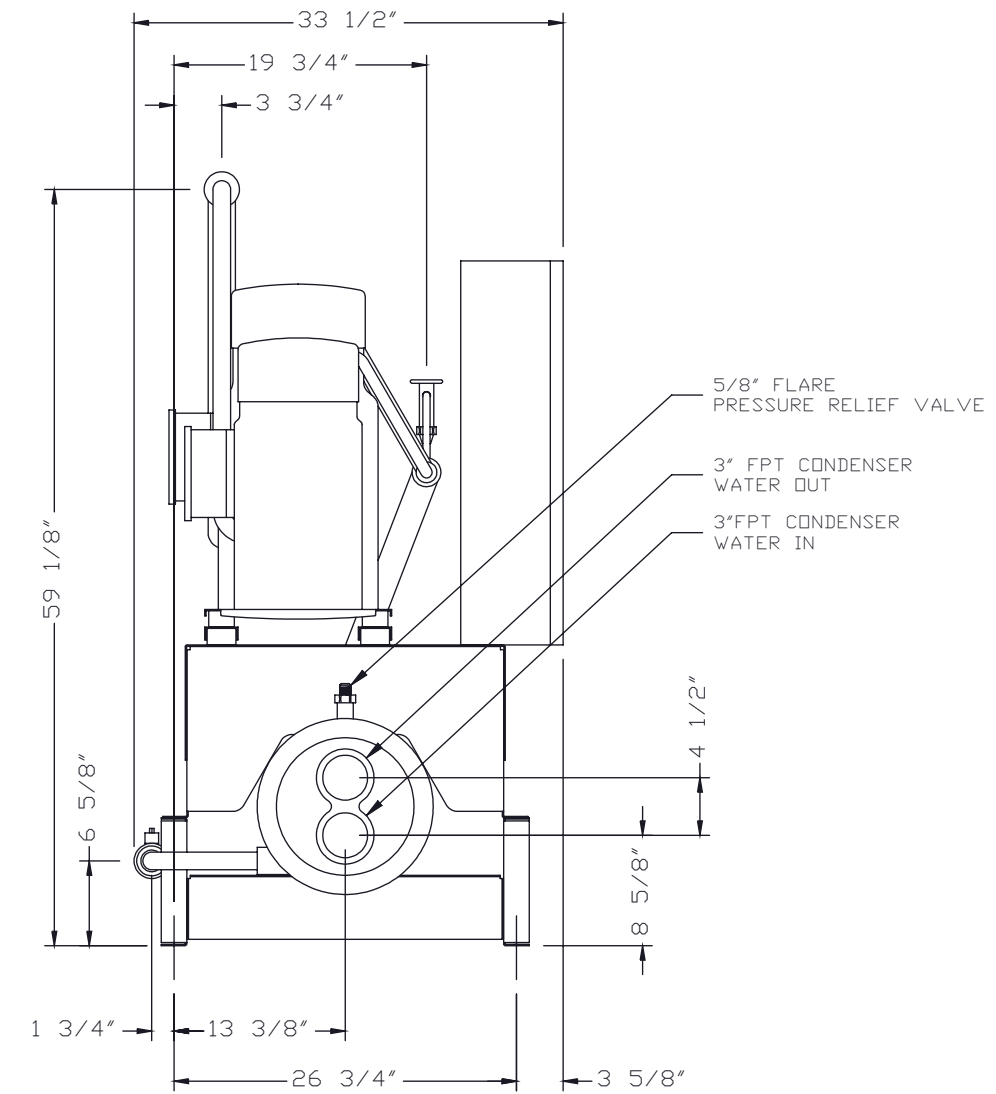
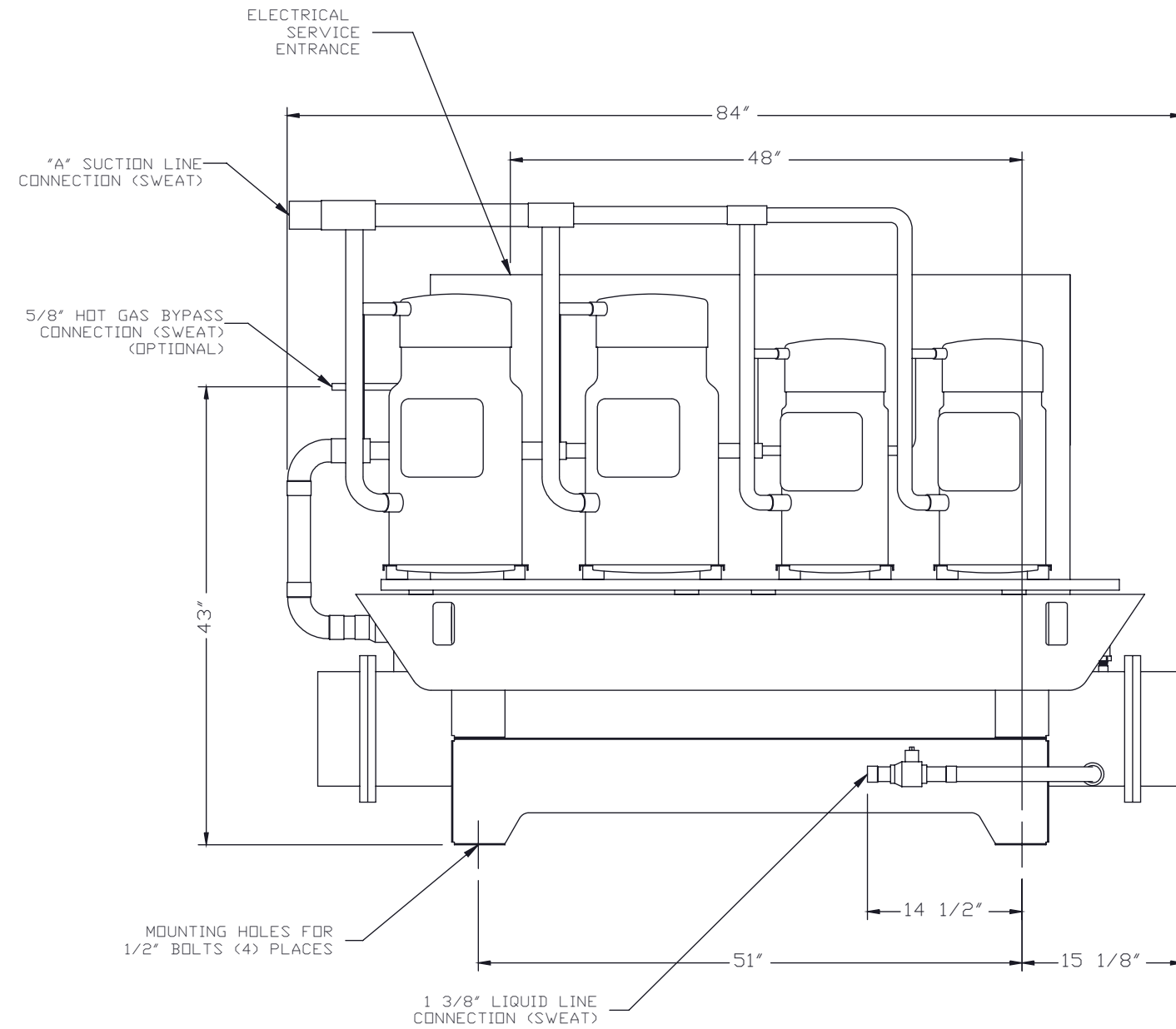


MODEL	PHYSICAL DATA		ELECTRICAL DATA – 208/230 VOLT, 3 $\phi$ , 60 HZ					ELECTRICAL DATA – 460 VOLT, 3 $\phi$ , 60HZ					ELECTRICAL DATA – 575 VOLT, 3 $\phi$ , 60HZ				
	"A"	OPERATING WEIGHT	COMPRESSOR RLA (EACH)	COMPRESSOR LRA (EACH)	MINIMUM CIRCUIT AMPACITY	MAXIMUM FUSE SIZE	RECOMMENDED TIME DELAY FUSE	COMPRESSOR RLA (EACH)	COMPRESSOR LRA (EACH)	MINIMUM CIRCUIT AMPACITY	MAXIMUM FUSE SIZE	RECOMMENDED TIME DELAY FUSE	COMPRESSOR RLA (EACH)	COMPRESSOR LRA (EACH)	MINIMUM CIRCUIT AMPACITY	MAXIMUM FUSE SIZE	RECOMMENDED TIME DELAY FUSE
SWU-50	2 5/8"	1849 LBS.	63/63/43/43	376/376/251/251	225	250	250	28/28/19/19	178/178/117/117	99	125	110	15/15/23/23	94/94/143/143	82	100	90
SWU-60	3 1/8"	1983 LBS.	63/63/63/63	376/376/376/376	265	300	300	28/28/28/28	178/178/178/178	118	125	125	23/23/23/23	143/143/143/143	98	110	100



**IMPORTANT**  
 THE INFORMATION CONTAINED HEREIN, WHICH IS THE PROPERTY OF NAPP'S TECHNOLOGY CORPORATION, MUST BE MAINTAINED IN STRICT CONFIDENCE AND NO PORTION OF THIS MATERIAL MAY BE REPRODUCED OR USED FOR ANY PURPOSE WITHOUT THE EXPRESS WRITTEN CONSENT OF NAPP'S TECHNOLOGY CORPORATION.

ENGINEER'S SEAL	BY	DATE	REVISION
	01 SMH	5-16-13	Added 575V Data
	02 KRS	10-1-14	Removed R22 Info

**Napps** NAPP'S TECHNOLOGY CORP.  
 P.O. BOX 3066  
 LONGVIEW, TX 75606-3066  
 WWW.NAPPSTECH.COM

TITLE: TYPICAL SWU 50,60 TON SCROLL WATER COOLED CONDENSING UNIT

SCALE: 1"=12" DRAWN BY: M.GREER CHECKED BY: M.GREER APP'D BY: EGN  
 DATE: 04/05/99

R407C UNITS

DRAWING NUMBER: SWU5060 REV. SHEET NO.: 02 NAPP'S JOB NO.: 1 OF 1