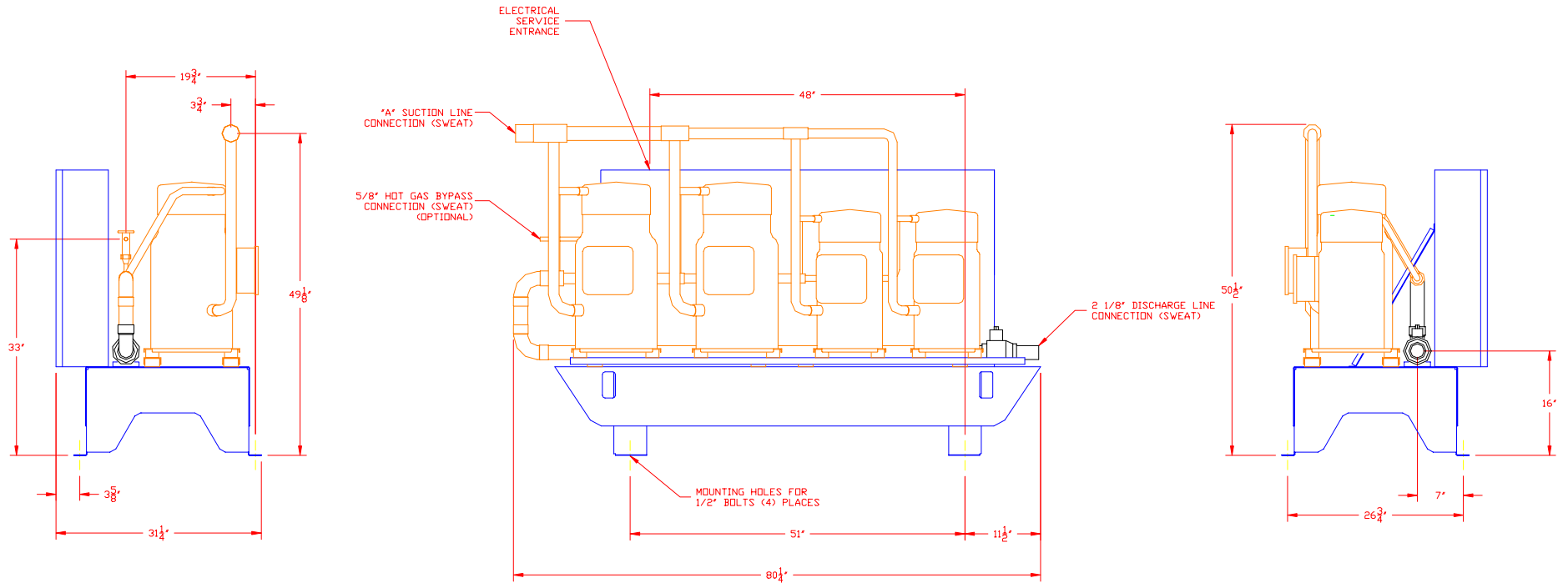


MODEL	PHYSICAL DATA		ELECTRICAL DATA - 208/230 VOLT, 3Ø, 60 HZ					ELECTRICAL DATA - 460 VOLT, 3Ø, 60HZ				
	"A"	OPERATING WEIGHT	COMPRESSOR RLA (EACH)	COMPRESSOR LRA (EACH)	MINIMUM CIRCUIT AMPACITY	MAXIMUM FUSE SIZE	RECOMMENDED TIME DELAY FUSE	COMPRESSOR RLA (EACH)	COMPRESSOR LRA (EACH)	MINIMUM CIRCUIT AMPACITY	MAXIMUM FUSE SIZE	RECOMMENDED TIME DELAY FUSE
SCU-50	2 5/8"	1224 LBS.	63/63/43/43	376/376/251/251	225	250	250	28/28/19/19	178/178/117/117	99	125	110
SCU-60	3 1/8"	1358 LBS.	63/63/63/63	376/376/376/376	265	300	300	28/28/28/28	178/178/178/178	118	125	125



IMPORTANT
 The information contained hereon, which is the property of NAPPS INDUSTRIES, INC., must be maintained in strict confidence and no portion of this material may be reproduced or used for any purpose without the express written consent of NAPPS INDUSTRIES, INC.

ENGINEER'S SEAL	BY	DATE OF REV.	REVISION

NAPPS INDUSTRIES, INC.			
P.O. BOX 2546 - LONGVIEW, TEXAS 75606-2546			
TRANE SCROLL COMPRESSOR UNIT			
SCALE: 1/16" = 1"	DRAWN BY:	CHECKED BY:	APPROVED BY:
DATE: 11/23/04			
TITLE: INSTALLATION OUTLINE		DRAWING B	
SCU-50 & SCU-60		SIZE	
DRAWING NUMBER: NI-400-2738	REV: 00	SHEET NUMBER: 1 OF 1	NAPPS JOB NO.: 00000